



Children's  
Cancer  
Foundation

# BRAVE HEARTS, BLOSSOMING FUTURES



THE HOPE TRAIN X ARTREPRENEUR  
BY CHILDREN'S CANCER FOUNDATION

## **All Aboard The Hope Train!**

*The Hope Train x ARTrepreneur campaign is dedicated to enhancing the employment prospects of young cancer survivors in the arts industry. It offers these talented individuals a unique platform to showcase their work and develop their skills alongside esteemed professional artists, Mr Barry Yeow and Mr Ridhuan.*



*Our tagline, "Brave HeARTs, Blossoming Futures," captures the courage and resilience of our youth survivors. Despite the challenges they face, the young aspiring artists stand strong, painting their journeys with courage, resilience, and hope. Together, they navigate the uncertainties of employment and survivorship, united by the collective spirit of The Hope Train.*

## Our Artists



**Rinesh Radhakrishnan**  
Childhood Cancer Survivor of Leukaemia

*From the depths of dirt  
The King of Hearts rises*

Rinesh has an adventurous spirit, and while it takes him some time to warm up, his gradual openness reveals a keen sense of exploration. After being diagnosed with childhood cancer, he faced unexpected challenges that affected his mobility and made it difficult to keep up with school. The impact of his illness and treatment prompted him to take a break from formal education to seek new opportunities.

He joined the ARTrepreneur programme, a decision he never anticipated would help him cultivate valuable learning and employment skills through art. As he engaged in the process, Rinesh gradually built his self-confidence and began exploring various art mediums. Encouraged by his peers, he started expressing himself more assertively. Today, Rinesh views art as a potential career path, taking pride in his growth and newfound direction.

His artwork serves as a heartfelt tribute to the resilience and vulnerability of the human heart. Drawing inspiration from the emotional journeys we all experience, Rinesh emphasises the importance of emotional support and the value of lending a helping hand. Using pastel tones, flowers, and color blends, he employs techniques like splattering, blending, and stamping to explore the theme of the "King of Hearts." His creations embody the message that emotional support is always accessible, even for those who appear strong, and are crafted with deep affection.

Through his art, Rinesh seeks to inspire patience and compassion, encouraging others to offer support and understanding as they navigate life's emotional landscape. His pieces reflect a commitment to fostering empathy and kindness, highlighting the transformative power of emotional connection and the beauty of supporting one another through life's challenges.

## Our Artists



**Ariffin Nasir**

Childhood Cancer Survivor of Ewing Sarcoma

*In this inner cove of calm  
I discover the peace I seek*

Ariffin is a compassionate individual who approaches new experiences with thoughtfulness. As a childhood cancer survivor, he has faced numerous challenges, including mobility issues and chronic pain. However, his passion for art and the opportunities provided by the ARTrepreneur Programme inspired him to pursue his creative interests and forge a meaningful career. This opportunity has revitalised his sense of hope and purpose, transforming his perspective on employment.

Immersing himself in the world of art, Ariffin is dedicated to honing his skills and conveying his journey through his creations. He takes pride in each piece, which serves as a testament to his experiences and resilience. By selling his artwork, he not only supports himself but also cultivates a fulfilling life aligned with his creative passions, inspiring others facing similar challenges.

Ariffin's art reflects deep emotions and personal experiences, characterised by his signature colors of black, yellow, and red, which create a vibrant and energetic atmosphere. His dynamic technique incorporates action painting, splattering, stippling, and scumbling, capturing the essence of real-life passion and impact. Through this expressive style, he transforms fears and anxieties into whimsical, cartoon-like forms, aiming to diminish their intensity and make them feel less overwhelming.

In doing so, Ariffin seeks to evoke strength, courage, and calm in his viewers, illustrating how art can turn challenges into sources of empowerment and tranquility. His work embodies his journey toward finding and building his own sanctuary of serenity, offering both emotional release and a comforting escape.

## Our Artists



**Soh Sheng Yang**  
Childhood Cancer Survivor of Brain Tumour

别来半岁音书绝  
一寸离肠千万结  
相濡以沫  
不如相忘于江湖

Sheng Yang has embarked on a profound journey of self-acceptance and purpose since his battle with childhood cancer. Despite the challenges he has encountered, he is committed to embracing his identity and exploring new avenues for self-discovery and connection. Driven by a passion for personal growth, Sheng Yang actively seeks opportunities that resonate with his core values and allow him to make a positive impact in the community.

Since joining the ARTrepreneur Programme, he has dedicated himself to enhancing his artistic skills, infusing his creations with vibrant colors and a sense of adventure. He takes great pride in sharing his artwork, which not only reflects his unique journey but also serves as a meaningful source of income and inspiration for others.

Sheng Yang's art is a personal exploration of his memories, emotions, and a profound belief in astrology. His admiration for Chinese poetry and the breathtaking vastness of the universe, particularly the mesmerising beauty of nebulas, deeply influences his work.

His artistic expression is intricately intertwined with poetry, combining both written and visual elements to convey his present self and his past experiences. This fusion encourages personal growth and self-discovery while inviting viewers to engage with their own emotions and experiences. Through his art, Yang fosters a deeper appreciation for the expressive power of creativity and its ability to reflect and nurture our evolving identities.

# Our Artists



**Ian Low**

Childhood Cancer Survivor of Leukemia

*Less is more*

*For in simplicity, we discover the deepest truths*

Ian's passion for art began in childhood, serving as a natural outlet for his self-expression. Despite the challenges of his health condition, he finds solace and strength in his artistic endeavors. Since joining the ARTrepreneur Programme, Ian has embraced the chance to delve into digital art, enhancing his skills and creating unique pieces that reflect his individuality. He takes immense pride in his creations, finding both meaning and joy in the process of making and selling his art, which he views as a significant source of income and personal fulfillment.

His work thrives on improvisation and unconventional thinking, drawing inspiration from Japanese culture and the Tokusatsu genre. Ian's artistic approach features strong concepts, thoughtful reflections, and dynamic silhouettes, blending images to forge entirely new visual experiences. Each piece invites viewers to explore ideas that transcend everyday reality, encouraging them to engage their imagination.

Ian's innovative techniques transform ordinary elements into extraordinary creations, embodying the rule of cool and proving that creativity knows no limits. His work serves as a reminder that inspiration can emerge from the most unexpected places, urging us to see the world through a lens of boundless possibility and inventive spirit.

## Our Artists



### Joeslynn

Childhood Cancer Survivor of Brain Tumour

*In the unhurried moments  
There lies a quiet wonder*

Joeslynn may appear reserved and shy, but those who take the time to know her quickly discover her quietly strong and unique perspective. As a childhood cancer survivor, she has navigated numerous challenges, grappling with the long-term effects of her illness.

With prior exposure to various art mediums, Joeslynn found solace in art, which has become a vital anchor in her personal growth. Undeterred by her past, she embraced the ARTrepreneur program, where she uncovered a newfound passion for art. This creative journey has allowed her to develop a distinctive style that reflects her experiences and viewpoints, giving her a voice and bolstering her confidence in expressing her ideas and connecting with others. Her artistic evolution, marked by steady progress, highlights her determination and enthusiasm. As Joeslynn continues to flourish as an aspiring artist, she sees this platform as a springboard for a fulfilling career in the arts, inspiring others with her remarkable story of courage and creativity.

Joeslynn's artwork offers a nuanced exploration of the subtle beauty found in her everyday encounters. As a deliberate and observant artist, she engages with the often-overlooked details of life. Her process reflects careful attention to these elements, which she captures through her gel painting techniques. Unhurried and dedicated, Joeslynn invites viewers to appreciate the slow, steady pace of the familiar, encouraging them to find meaning in the understated aspects of their surroundings.

Her pieces frequently feature birds, symbolising freedom and the delicate balance of independence within nature. Through her art, Joeslynn expresses a deep love for animals and advocates for greater empathy and care towards them. She seeks to inspire a collective sense of responsibility and affection for all living beings, urging us to cherish and protect the creatures that enrich our lives.

## Our Artists



**Nur Rabiatutadawiah**  
Childhood Cancer Survivor of Brain Tumour

*Pure and boundlessly joyful  
Though I may not always show it  
I feel it deeply within*

Rabia embodies a gentle spirit characterised by simplicity and kindness. As a childhood cancer survivor, she has navigated numerous challenges, including managing multiple disabilities resulting from her illness and its treatment. Although she requires significant support in her daily life, Rabia has discovered her gift for creating art that expresses her story and aspirations. Each piece symbolises her personal growth and the hope she wishes to share with others. Despite the obstacles she faces, Rabia's resilience shines through, using her art as a source of inspiration and strength. Through her participation in the ARTrepreneur Program, she aspires for her artwork to become a voice of hope and a meaningful contribution to her family—an achievement she holds dear.

Rabia's art is deeply inspired by her love for flowers, emphasising positivity and happiness. She finds joy in bright colors like yellow, which she employs to evoke warmth and delight. Her appreciation for nature is evident in her work, as she often integrates elements that reflect her admiration for floral beauty.

Her artistic style is defined by the blending and molding of images to convey her emotions. Rabia transforms her feelings into layers of color, often embodying themes of simplicity and light. Her work aims to spread positivity and hope, helping her rise above stagnation and sorrow. By focusing on uplifting and vibrant elements, Rabia's art serves as a powerful reminder of the strength of a positive perspective.






## Floral Fantasy

Inspired by the theme "Floral Fantasy," the young aspiring artists were encouraged to step out of their comfort zones and create works that embody narration and imagination. This allowed them to freely express their thoughts while responding to the theme. Through this process, they gained the confidence to discover their potential and capacity as independent artists.

The art sessions with artists Barry and Ridhuan included lessons on understanding concept requirements for assignments and project undertakings. They also focused on overcoming artistic struggles and developing creative solutions for their entrepreneurial objectives and direction. Ultimately, these sessions led the young artists to complete their most significant work ever—an original piece of art.





Joeslynn  
Happy Grassland  
Acrylic on Canvas  
96cm x 66cm  
\$1,000

The artist transports herself to an unknown place within her mind each time she paints. Her work depicts a happy garden with a snail on the grass, a flying bunny, and a butterfly in the sky, along with a mushroom-shaped house and a heart-shaped tree. Her concluding thought, "Snail takes its time," serves as a reminder to take our time and enjoy her creation and life itself.



Soh Sheng Yang  
The Four-Season Flowers  
Acrylic on Canvas  
96cm x 66cm  
\$1,000

Despite his social interaction challenges, this artist's love for poetry and calligraphy shines through in his work. His piece reflects the ever-flowing time through four-season flowers and the essence of loss through his poem. Though the specifics of the loss remain unclear, the artwork invites viewers to ponder between truth and emotional resonance.



Rinesh Radhakrishnan  
Red Spider Lily  
Acrylic on Canvas  
66cm x 96cm  
\$1,000

Influenced by stories that stay vivid in memory, the artist chose to depict the red spider lily, despite initial doubts about his ability to paint it. His determination to tell a story he truly believes in is evident in his work.



Nur Rabiatusadawiah  
Panda  
Acrylic on Canvas  
96cm x 66cm  
\$1,000

Using art as a form of communication, the artist combines the imagery of a panda and a sunflower to convey a message of overcoming significant life challenges and maintaining positivity.



Ariffin Nasir  
Friend In Finality  
Acrylic on Canvas  
66cm x 96cm  
\$1,000

Imaginary friends often take various forms, but this artist's creation symbolises the transformation of trepidation into a friendly inevitability. This piece represents the courage to understand and rewrite challenging situations, offering solace and acceptance of what lies ahead.




Ian Low  
Charming Carnage  
Digital Art Stretched on Canvas  
66cm x 96cm  
\$1,000

Known for his serious demeanour, this artist surprises with a provocative yet playful piece. It narrates thoughts on historical rhetoric and the implications of wars, using orchid mantis in an anime character, burning trees, and symbolic colours. The artwork blends serious topics with a sense of humour.



## **Twist of the Tale**

On the final art session, our young artists embraced a commission-like challenge that truly tested their creativity and resilience. They were given just 30 minutes to create a floral-themed masterpiece, using only a limited palette of paint colours and no traditional painting tools. This exercise not only stimulated their inventive spirit but also honed their ability to work under pressure—essential skills for any aspiring entrepreneur. Through this challenge, they demonstrated remarkable ingenuity and determination, transforming constraints into beautiful expressions of their talent and passion.







Joeslynn



Ariffin Nasir



Ian Low



Soh Sheng Yang



Rinesh Radhakrishnan



Nur Rabiatutadawiah


Twist of the Tale  
Acrylic on Canvas  
33cm x 41cm  
\$150 per artwork



## The Beginnings

During the ARTrepreneur sessions together with CCF's in-house Art Therapist, the youth artists explored the different mediums including Acrylic Painting and Pottery.

Completed during the beginning of the year, these works showcases the journey of the youth artists from when they just began.





Nomikai 飲み会  
Ceramic, glazed and fired at 1200  
75cm x 30cm  
\$300

In Japanese culture, Nomikai signifies a warm welcome, often celebrated through drink gatherings at workplaces. This collection of five ceramic mugs embodies this tradition while intertwining it with the journey of overcoming cancer and embracing new beginnings in the workforce. Each piece in the Nomikai set stands as a testament to resilience, creativity, and the ARTrepreneur spirit, symbolising the transition from survivorship to thriving careers.

The Nomikai collection features five distinct ceramic mugs, each representing a unique personal and artistic journey. Just as each mug varies in shape and tone, so do the stories of those who have triumphed over cancer and are now embarking on new careers as ARTrepreneurs.



Bond of Persimmons  
Ceramic, glazed and fired at 1200  
101cm x 34cm  
\$300

Bond of Persimmons is a collection of six ceramic trinket dishes, each adorned with a unique spirit animal. These dishes embody the individual artists and their aspirations, highlighting the diverse and vibrant spirits that inspire their creativity. Meticulously handcrafted, each dish serves not only as a functional piece for holding treasures but also as a symbol of the artist's uniqueness and dreams.

The collection showcases a colour palette inspired by kaki—Japanese for persimmon—evoking the rich hues of autumn. This seasonal motif enhances the sense of unity and diversity within the artistic community, with each spirit animal contributing a distinct element to the shared narrative.



### Seas of Hexagons

Ceramic, glazed and fired at 1200

2.5cm x 2.5cm x 1.5cm (ash)

4.5cm x 4.5cm x 3cm (teal)

4.5cm x 4.5cm x 3cm (forest)

9.5cm x 9cm x 3cm (moon)

7cm x 6cm x 5cm (pink)

8cm x 8cm x 6cm (lavender ivory)

\$350

The Seas of Hexagons collection draws inspiration from the natural forms found in both land and sea, showcasing various foundational techniques such as hand building, coiling, and slab construction.

The series celebrates the dynamic relationship between land and sea while highlighting the versatility of traditional ceramic methods. The colour palette is reminiscent of *kaki*—the Japanese word for persimmon—evoking the richness of autumn. This seasonal touch enhances the unity and diversity within the artistic community, with each spirit animal contributing a unique element to the collective narrative.



### Fossil Play

Ceramic, glazed and fired at 1200

10cm x 8cm x 6cm (teapot)

3.5cm x 3.5cm x 5cm (thumb)

6cm x 5cm x 3.5cm (dumpling)

\$270

Fossil Play showcases three symbolic objects that celebrate the joy of play and life's simple pleasures. The charming teapot, perfect for masak-masak (pretend cooking), inspires childhood creativity and imagination. The thumb piece symbolizing positive reinforcement in play. Lastly, the Gyoza represents the joy of sharing food, highlighting comfort and happiness in togetherness. Together, these elements capture the essence of playful moments, supportive encouragement, and the delight in everyday experiences.



### Tom & Jerry

Ceramic, glazed and fired at 1200

9cm x 8.5cm x 6.5cm (big)

5cm x 4.5cm x 3.5cm (small)

\$250

Introducing Tom & Jerry: a whimsically named duo of handcrafted cups in a warm sand colour, capturing the spirit of companionship and contrast. The larger cup, a symbol of strength, brings a sturdy and comforting presence, while the smaller cup, representing charm, offers a delicate and refined drinking experience. Together, these cups celebrate the beauty of togetherness in diversity, reminding us that true companionship flourishes through differences, embodying the unbreakable bond between even the most unlikely pairs.



Joeslynn  
Life in Red  
Acrylic gel prints on bristol paper  
78cm x 35cm  
\$300

"Life in Red" is a captivating series of three round prints that capture the warmth and vibrancy of the sun. Each piece features a rich palette of warm hues, evoking the sun's radiant glow, while depicting various beings, such as a zebra or a seal, symbolising life and independence. The contrast between these unique creatures and the sunlit backgrounds highlights the individuality and freedom of each life form.



Soh Sheng Yang  
Divulge  
Acrylic gel prints on bristol paper  
47cm x 47cm  
\$150

"Divulge" is a captivating series of prints featuring the vibrant hue of fuchsia, exploring the theme of cherishing the present while honouring the past. The artwork represents a journey of self-discovery, shaped by the quest for the perfect shade of fuchsia, which symbolizes the contrasting phases of past and present. This colour evokes nostalgia while embracing the acceptance of one's evolving identity.



Nur Rabiaturadawiah  
Against Adversity  
Acrylic on Canvas  
88cm x 28cm  
\$300

Inspired by the artist's experiences and her mother's reflections, 'Against Adversity' features a flourishing plant symbolising the journey from uncertainty to strength. This artwork captures the process of learning and adapting through life's challenges, fueled by inner resilience and external influences. The title encapsulates life's ups and downs, highlighting the perseverance required to flourish while celebrating individuality and freedom.



Nur Rabiaturadawiah  
Wonder Rabi  
Acrylic on Canvas  
29cm x 23cm  
\$120

"Wander Rabi" reflects a resilient spirit through bold vertical stripes, marking a transformative shift for Rabi, who faces mobility challenges that limit her painting ability. Despite the physical effort involved, this piece symbolises her defiance against limitations and her determination to step beyond her comfort zone, serving as a powerful reminder to embrace her courageous side and move into the growth zone.





Ariffin Nasir  
Goodbye Sunset  
Acrylic on Canvas  
47.5cm x 37cm  
\$150

"Goodbye Sunset" beautifully captures the tranquillity of dusk, using birds in flight as a metaphor for releasing stress and embracing calm. Inspired by the artist's personal journey of finding solace amidst sadness and pain, this artwork reflects the soothing impact of sunsets. While fishing, the artist would call out to the birds at sunrise, wishing they could carry away his worries. Their soaring symbolises letting go, bringing him peace. This piece embodies the comfort and serenity found in nature's rhythms, visually expressing the relief and calm that sunsets can provide.



Ian Low  
Freedom Untamed  
Acrylic gel prints on Bristol paper  
37cm x 37cm  
\$150

"Freedom Untamed" showcases a captivating diamond-like form shrouded in darkness, symbolising the brilliance of imagination constrained by reality. This artwork invites viewers to ponder the nature of enjoyment and allure, regardless of conventional logic. The diamond's concealed beauty signifies the limitless potential of creativity, eager to be uncovered. From various angles, the diamond's outline glimmers, highlighting that freedom and originality shine when allowed to break free from limitations.



Rinesh Radhakrishnan  
Sanctuary of Life  
Acrylic on Canvas  
29cm x 23cm  
\$120


Sanctuary of Life embodies the themes of perseverance and the strength needed to persevere in the face of adversity. This artwork honours the resilience of individuals who, despite their challenges, work tirelessly to support their families and uplift others. It emphasises the importance of maintaining health and finding a sense of sanctuary amid life's difficulties.

The piece serves as a powerful reminder that, even in tough times, a mental sanctuary exists to aspire to—symbolised by the lush greenery that lies beyond the dirt. It encourages viewers to hold this sanctuary in their hearts, representing hope and the promise of renewal despite the obstacles encountered. Ultimately, the artwork highlights the delicate balance between enduring hardships and nurturing one's inner sanctuary for a richer, more resilient life.



## Jesmonites

Jesmonite is a versatile and eco-friendly composite material renowned for its durability and sleek finish, making it perfect for crafting functional objects. The collection of Jesmonite items—coasters, holders, paperweights, vases, and trinket dishes—showcases the survivors' commitment to learning and perfecting their skills. As they mastered the art of mixing ratios and marbling techniques, they refined their craft through hands-on practice, creating practical pieces for everyday use. Each item embodies the meticulous care and attention to detail cultivated throughout their ARTrepreneur journey.

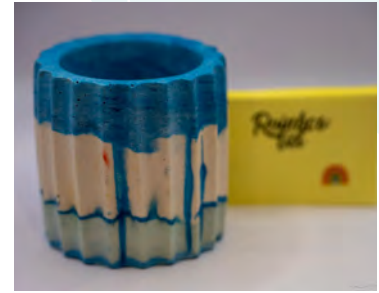




#1

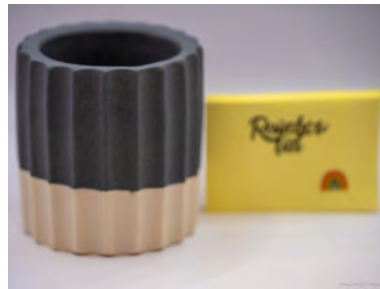


#2



#3

Each piece of work is available for adoption at **\$20**.



#4

7.5cm x 8cm x 8cm



#5

9cm x 9cm x 8.5cm



#6



#7

8cm x 8cm x 9cm

Each piece of work is available for adoption at **\$35**.  
Kindly note that each item includes only the art piece.



#8



#9

3.5cm x 12.5cm x 11cm



#10



#11

9cm x 15.5cm x 5.5cm

Each piece of work is available for adoption at **\$35**.



#12

6cm x 10cm x 6cm



#13

10cm x 10cm x 3.5cm



#14

11cm x 13cm x 6cm

Each piece of work is available for adoption at **\$20**.



#15



#16



#17

15cm x 12cm x 1.5cm



#18



#19



#20



#21

9cm x 17.5cm x 1.5cm

Each piece of work is available for adoption at **\$20**.  
Kindly note that each item includes only the Jesmonite art piece.



#22



#23



#24

11.5cm x 11.5cm x 1.5cm



#25

#26

6cm x 7cm x 7cm

Each piece of work is available for adoption at **\$20**.  
Kindly note that each item includes only the Jesmonite art piece.



#27



#28



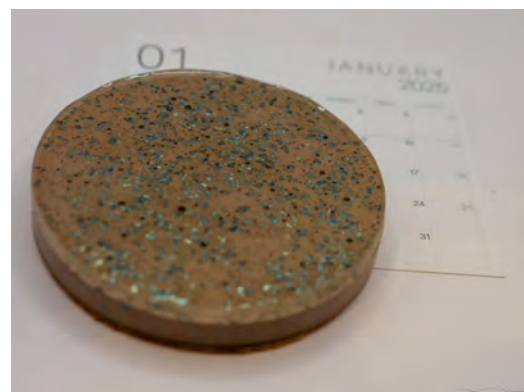
#29



#30



#31



#32

8cm x8cm x 1.5cm

The items are available for adoption in sets of three for \$20.





**Brave HeARTs, Blossoming Futures**  
Acrylic on Canvas  
150cm x 120cm

"Brave HeARTs, Blossoming Futures" is a vibrant co-created work by the youth survivors and professional artists Barry Yeow and Ridhuan. This powerful piece captures the strength and resilience of young cancer survivors, transforming hardship into growth and flourishing hope. Through expressive strokes and dynamic colors, the artwork tells a story of overcoming adversity and the beauty that resilience can bring.

Adding a profound layer of meaning, Guest-of-Honour Ms. Jane Ittogi completed the artwork at the opening launch of this exhibition on 5 Nov 2024. Witnessed by the youth survivors and professional artists, she did the finishing stroke that completes the collective vision of the co-created artwork. Her involvement symbolises the unity and commitment of the community in championing these youth survivors, marking this piece as a true collaboration that embodies hope for blossoming futures.

Available for auction with a starting bid of \$10,000, this artwork stands as both an inspiration and an emblem of courage and community support.

**Scan to place your bid**



## **Support The Hope Train x ARTrepreneur 2024:**

### **1. Adopt our artwork**

- Please email [hello@ccf.org.sg](mailto:hello@ccf.org.sg) on the artwork that you are interested in (provide us with the Artwork Title).
- CCF will check on the availability of the Artwork.
- The Artwork will be reserved for you if it is available. Following which, we would provide the payment details to your email for payment.

100% of the proceeds from the adoption of the artworks will go directly to the budding artists.

### **2. Visit the Art Exhibition**

- Period: 6 November 2024 to 4 January 2025
- Venue: Flower Dome (Mediterranean Garden), Gardens by the Bay

### **3. Make a donation**

- Donate in support of the campaign on [CCF website](#), [Giving.sg](#) or [Give.Asia](#).

**Scan to read more about  
The Hope Train x ARTrepreneur 2024**



## Acknowledgements & Appreciation

### **Special Thanks To:** Keith Teo, CCF Youth Leader

We extend our heartfelt thanks to Keith, our dedicated youth leader, for his contributions to the individual and group art-making process. Keith has consistently demonstrated patience, creativity, and reliability, ensuring that all projects are completed effectively. Keith has been instrumental in guiding the ARTrepreneurs through their creative journeys, offering valuable input and support at every step. We deeply appreciate Keith's thorough commitment and the positive impact he has made on our team.

